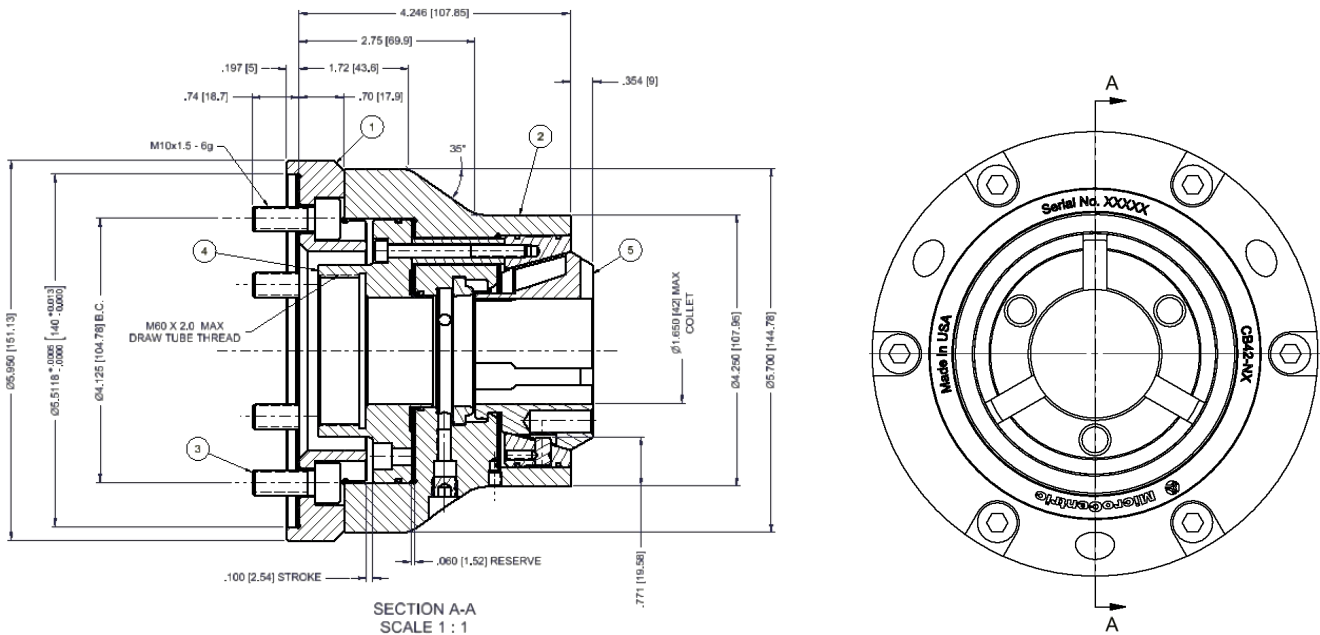


Specifications

Chuck Model	Spindle Nose	Collet Model	Accuracy Max Radial Runout	Collet Capacity	Collet Clamp Range	Chuck Stroke Linear	Max Draw Tube Force	Max Clamping Force	Max Speed	Chuck Weight
CB42-NX/140	140mm	42BZI	.0004" 0.010mm	1.625" 42mm	+/- .020" 0.5mm	0.160 4mm	7,868 35 kN	17,985 80 kN	7,000 rpm	18.4 lbs 8.4 kg

Dimensions



ITEM	QTY	PART NUMBER	DESCRIPTION
1	1	16 042 306	ADAPTER
2	1	16 042 500	FITTED BODY AND SLEEVE
3	6	83 193 M025	MOUNTING SCREW
4	1	SEE NOTES	DRAW TUBE CONNECTOR
5	1	20 742 0000	COLLET

NOTES

1. THE CHUCK IS SHOWN IN THE NOMINAL CLAMPED POSITION.
2. DRAW TUBE CONNECTOR AND THREAD PER CUSTOMER REQUIREMENTS.
3. THE CHUCK IS SHOWN WITH THE MAX COLLET BORE.